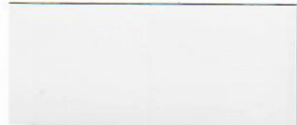


800-426-7737

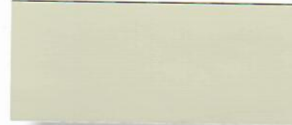
www.UNACLAD.com



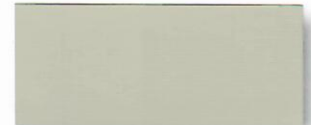
STONE WHITE SR



BONE WHITE SR



ALMOND SR



SANDSTONE SR



SLATE GRAY SR



CITYSCAPE SR



CHARCOAL GRAY SR



SIERRA TAN SR



MEDIUM BRONZE SR



DARK BRONZE SR¹



EXTRA DARK BRONZE



MATTE BLACK SR¹



BRANDYWINE SR²



COLONIAL RED SR



TERRA COTTA SR



MANSARD BROWN SR



REGAL RED SR



AWARD BLUE ★



SKY BLUE SR



ELECTRIC BLUE ★



REGAL BLUE



TEAL



PATINA GREEN SR



DARK IVY SR²



SHERWOOD GREEN SR



HARTFORD GREEN



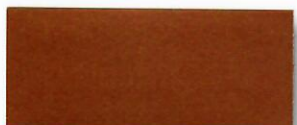
HEMLOCK GREEN SR



TROPICAL PATINA SR



SILVER METALLIC SR★



CLASSIC COPPER SR★



CHAMPAGNE METALLIC SR★

★ = Premium Color  
SR = Solar-Reflectant color, with KYNAR finish having Reflectivity of at least 0.25  
\*SR¹ values qualify in steel only  
\*SR² values qualify in aluminum only

**Protective film must be removed immediately after installation.  
For a true color representation, please call or write for actual metal sample(s).**